

The CR3-5 General Purpose Pallet

The Ultimate High Strength Perimetric Pallet

- Perimetric design with three longitudinal and two transversal runners.
- Designed as a general purpose pallet suitable for pooling and universal use.
- Extremely high load bearing capability due to integrated reinforcement profiles.
- Unique antislip topdeck for increased load safety.

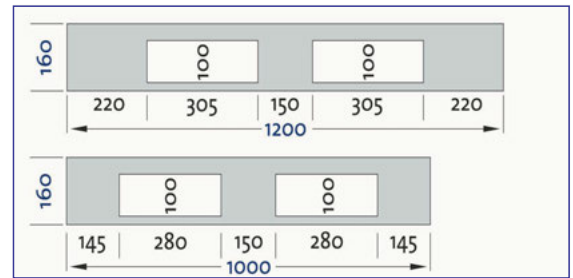
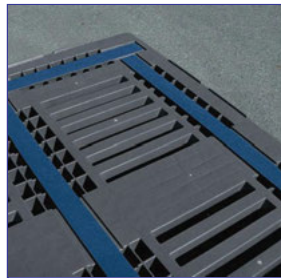


Individual Printing and Customisation

Hot foil stamping of letters, logos and numberings on request, depending on the number of pieces:
 Max. size: 85 x 85 mm
 Number of 15 mm letters: 9 (3 lines)
 Number of 30 mm letters: 4 (2 lines)



On both sides on the left foot, lengthwise (also possible on all four feet by additional process)



Dimensions (Ext): 1200mm L x 1000mm W x 160mm H

Deck Type: Closed

Base Type: 5 Runners

Fork Entry: 4-Way

Rackable: Yes

Static Load Rating: 7500kg

Dynamic Load: 1500kg

Racking Load: 1250kg

Integrated reinforcement profiles guarantee highest stability and load bearing capability.

In-Store Offer

\$ 124.95 + gst
 North Island Only (Auckland, Hamilton & Wellington)

\$ 134.95 + gst
 South Island Only (Christchurch)



For more information please call us on 0800 08 2000 or visit us online @ www.stowers.co.nz

Pricing exclusive of GST and is valid to Auckland, Hamilton & Wellington only whilst stocks last. All specifications are correct as of 01.11.2011 though are subject to change without warning - please contact us if these details are critical. Our full terms & conditions are available online @ www.stowers.co.nz